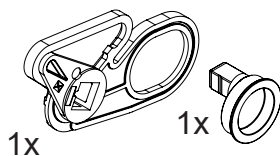
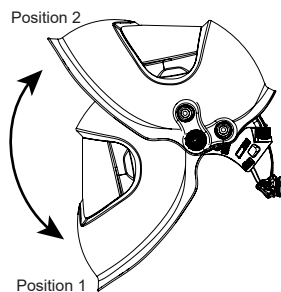
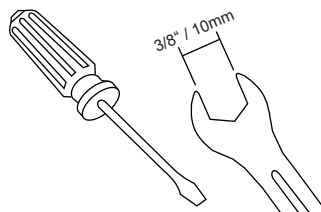


POSITION LOCKER

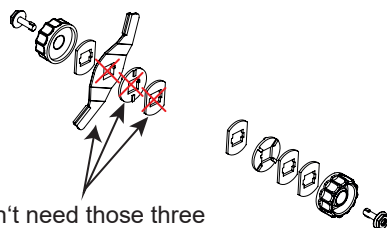
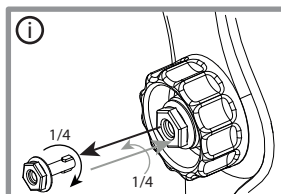
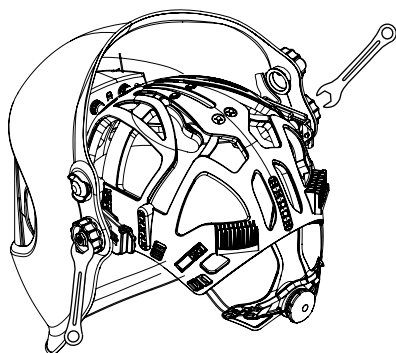
Content



What you need

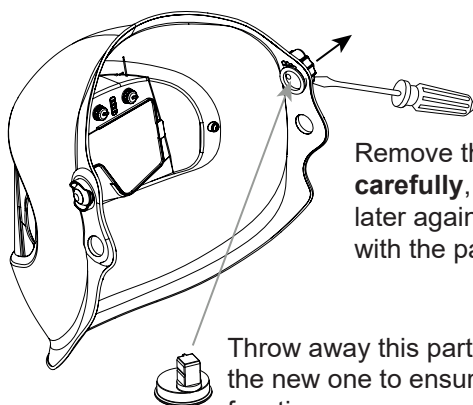


Disassemble your headgear

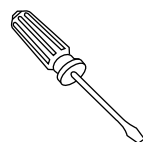


You don't need those three items for the assembly of the position locker.

Disassemble the excenter

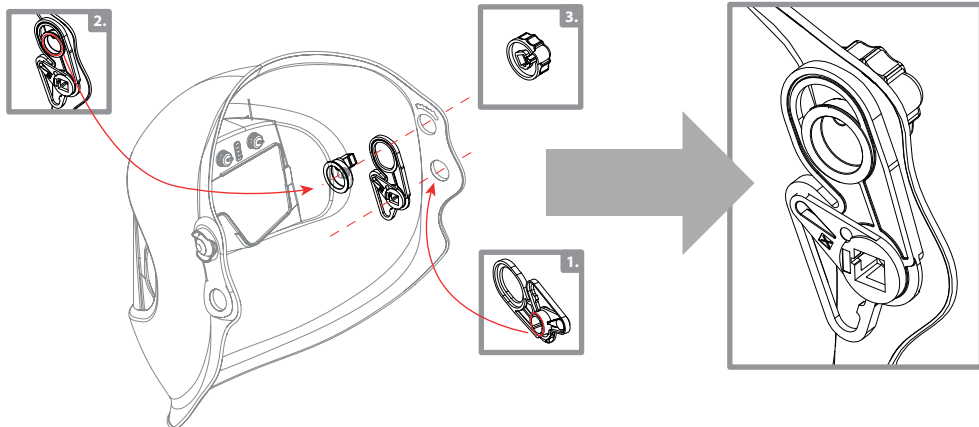


Remove the excenter **carefully**, you'll need it later again. And be careful with the painted surface.



Assemble the position locker

Please follow the steps as shown to ensure an easy assembly.



Assemble the IsoFit

Please consider the sequal arrangement as shown to ensure the correct function.

